



Northern Minnesota Network

29 West Main St. Isanti, MN 55040

Phone: 763-444-8283 Fax: 763-444-9637

Monday—Friday—8:00am—4:30pm

www.northernmnnetwork.org

Inside This Issue

Grand Opening.....pg.1

Director's

Message.....pg.2

Technology

Tips.....pg.3

Many Faces.....pg. 4

Affordable

Care Act.....pg.5

NMN Member

Clinics.....pg.6

Dates to Remember

INK Call.....Oct. 9

NMN Board

Meeting.....Oct. 9



Grand Opening of Involta's Data Center in Duluth, Minnesota

SISU medical Solutions has partnered with and will be an anchor tenant in Involta's newest data center in Duluth. The high-security colocation data center will house mission critical computer systems and related components for healthcare organizations, businesses, government and educational institutions.

The \$10.5 million facility is a stable, predictable, high-performance data center complete with environmental systems and controls, redundant back-up power, specialized fire suppression, and reinforced concrete building construction. The 24,000 square foot facility features 10,000 square feet of conditioned data center space that will utilize the naturally cooler climate of Duluth to increase efficiency. For more information visit— www.sisunet.org and www.involta.com

Message from the Director.....

Jackie Moen

We are delighted to share the good news reported in the October, 2012 edition of Consumer Reports. The special section, “Minnesota Doctor Ratings: How Does Your Doctor Compare?” rated 552 Minnesota practices on health outcome data related to diabetes and cardiovascular disease. They highlighted data from Minnesota Community Measurement, a non-profit group working to improve health care and reduce cost. Our member, Scenic Rivers Health Services, has five centers across the rural Northeast region of Minnesota. Their clinics at Bigfork, Big Falls and Northome are among the top scoring CHCs in the state for diabetes and cardiovascular care. Medical Director, Dr. Jeff Scrivner, is quoted in the article that can be found at www.consumerreports.com. Congratulations!

This autumn season brings a flurry of activities for the Network and our members. We just sponsored a two-day QI Team Meeting in Duluth last week, attended by 20 staff from all five members. This team focuses on QI programs, process, data extraction, and quality reporting to meet multiple needs across health centers. This QI team has been moving to the next level with reporting for MU, PCMH, and UDS.

Next month we sponsor the EHR-MU conference in Duluth. There will be featured speakers, panel discussions and break-out sessions for many areas in health information technology. Watch for the agenda on our website.

Member Community Health Partnership of Illinois goes live with the Centricity EHR system in October. The NMN is providing on-site support during their phased go-live implementations. We’ll bring up sites every three weeks and have their sites all “live” by late November. All the hard work done by the EHR Core Team the past eight months is paying off!

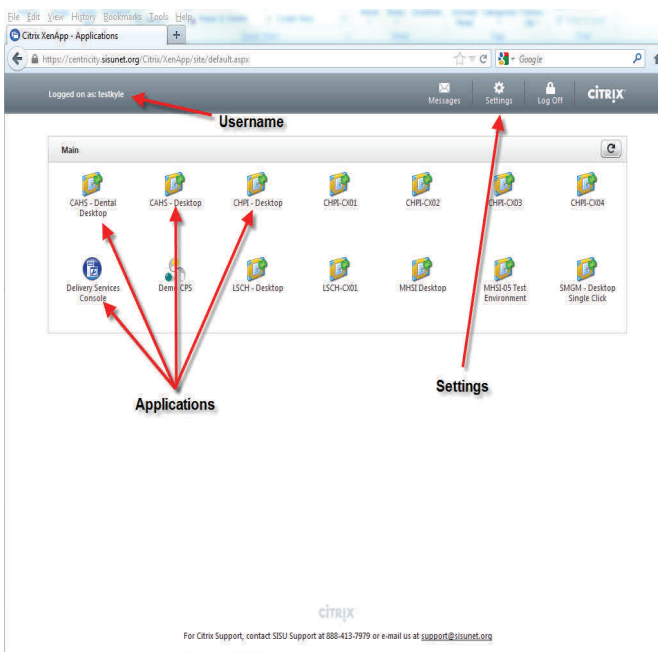
This Month's Technology Tips

By Kyle Gilbertson

Logging onto Citrix and Centricity

Logging onto Citrix

1. Use Internet Explorer, if you use a different Web Browser (Mozilla Firefox or Google Chrome) you may experience problems logging onto Citrix, go to <https://centricity.sisunet.org>



2. When you get to that site, you will be presented with a Citrix Login Box (You will also notice the Northern Minnesota Network logo)

3. Enter your username and password, same that you use to log into the PC, if on the SISU domain

4. Once username and password is entered, you will then be sent to a page that has all the applications that you have access to. You will also notice that it has the username of the person logged on.

5. Under Settings, you can Change your Password and change the Window Size that Citrix will be when it launches, i.e. Full Screen, 80% of Screen, 1024x768

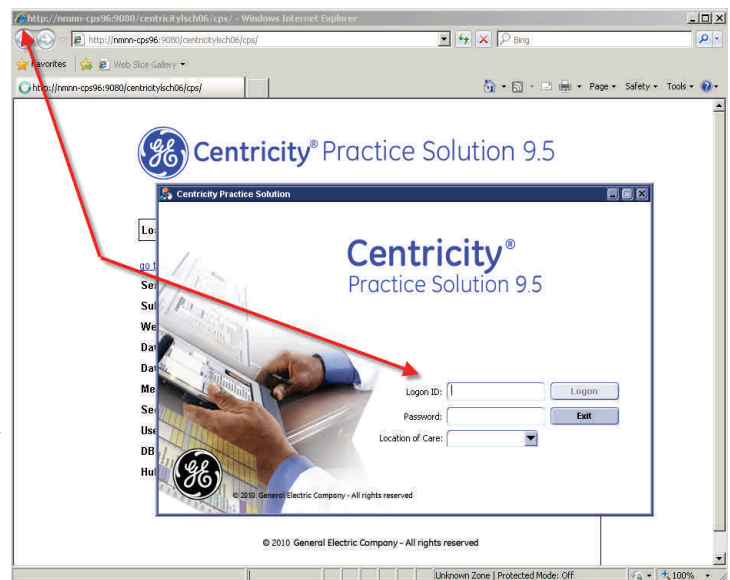
6. Save Settings

7. Make sure to only Single Click on Application, even though you may not see anything happening, Citrix is opening in background

8. Once Citrix launches, you can see that you are in Citrix by looking at top left

Logging onto Centricity

1. Once logged into Citrix, Double Click on the Centricity Icon on Desktop
2. That launches Internet Explorer, which launches the Centricity Login box, enter username and password
3. Once Logged in, the Centricity menu will appear.



7th Annual—2012 Many Faces of
Community Health Conference

"Stepping Up to Transform Health Care"

Thursday & Friday, October 25 – 26, 2012

Many Faces of Community Health is a 2-day event exploring ways that safety net providers can improve care and reduce health disparities in underserved populations. Many Faces 2012 will continue our examination of the ongoing impact of health reforms on the delivery of health care to the medically underserved.

Our annual conference covers clinical, public policy, and management topics that impact quality improvement and health disparities in primary care settings. The conference emphasizes sharing practical tools, tips, and resources, as well as providing useful information, inspiration, and networking opportunities.

Our 2012 theme is **"Stepping Up to Transform Health Care."** We will look at many of the challenges and opportunities in the new environment of market innovation that CHCs and their partners are utilizing to promote health equity, prevent chronic disease, and to continue assuring access to the underserved. All of this—and more—will be covered.

As policy reform heats up, Community Health Centers are **"Stepping Up"** to challenges and opportunities in the new environment of market innovation. CHCs and their partners are forging the best ideas and tools into new delivery models to promote health equity, to prevent chronic disease, and to assure access for the underserved – now and into the future.

The ACA and Free Preventive Services

The Affordable Care Act made many preventive services available to Medicare beneficiaries at no cost.

The Affordable Care Act – the new health care law – helped over 16 million people with original Medicare get at least one preventive service at no cost to them during the first six months of 2012, HHS Secretary Kathleen Sebelius announced in July. This includes 1.35 million beneficiaries who have taken advantage of the Annual Wellness Visit provided by the Affordable Care Act.

Prior to 2011, people with Medicare faced cost-sharing for many preventive benefits such as cancer screenings. Through the Affordable Care Act, preventive benefits are offered free of charge to beneficiaries, with no deductible or co-pay, so that cost is no longer a barrier for seniors who want to stay healthy and treat problems early.

The law also added an important new service for people with Medicare — an Annual Wellness Visit with the doctor of their choice— at no cost to beneficiaries. For more information on Medicare-covered preventive services, visit Healthcare.gov.

—This article is adapted from the July 10, 2012, CMS press release. For the full press release, visit the [CMS website](http://www.cms.gov).



NMN Member Clinics

Migrant Health Service, Inc.

www.migranthealthservice.org

Moorhead 218-236-6502

Grafton 701-352-4565

Rochester 507-529-0503

Willmar 320-214-7286

Sawtooth Mountain Clinic

www.sawtoothmountainclinci.org

Grand Marais 218-387-2330

Grand Portage 218-475-2235

Tofte 218-663-7263

Cook Area Health Services dba

Scenic Rivers Health Services

www.scenicrivershealthservices.org

All SRHS Clinics can be reached Toll Free at 877-541-2817

Bigfork, Big Falls, Cook, Floodwood and Northome

Lake Superior Community

Health Center

www.lschc.org

Duluth 218-722-1497

Superior 715-392-1955

Community Health Partnership of Illinois

www.chpofil.org

Aurora 630-859-0015

Hoopeston 217-283-5523

Kankakee 815-932-6045

Mendota 815-539-6124

Rantoul 217-893-3052

Woodstock 815-337-9640

Admin. Office 312-795-000

The Northern Minnesota Network

We take our mission to heart and commit to serving our member organizations through customized service.